

Gemelli



Fondazione Policlinico Universitario Agostino Gemelli IRCCS
Università Cattolica del Sacro Cuore

The Gemelli Generator concept: the development, implementation and future perspective



GemelliGenerator
Clinical research beyond tomorrow



CONTENTS

1. Mission & Architecture
2. Research Lines
3. Use Case
4. Future perspective

03

GENERATOR REAL WORL DATA TEAM



Multidisciplinary team:

- Engineers
- Clinicians
- Mathematicians
- Physicists
- Research nurse

MISSION

SUPPORT CLINICAL RESEARCH TO DEVELOP PERSONALISED/PRECISION MEDICINE LEVERAGING REAL WORLD EVIDENCE AND DATA SCIENCE METHODS.

HOW

- SCIENTIFIC RESEARCH
- INDUSTRIAL COOPERATION
- DEPLOYMENT IN CLINICAL PRACTICE
- FIELD-SPECIFIC EDUCATION



INDUSTRIAL COOPERATION



SCIENTIFIC RESEARCH



DEPLOYMENT IN CLINICAL PRACTICE



EDUCATION

• PREDICTIVE

• PARTICIPATORY

• PREVENTIVE

• PERSONALIZED

SKILLS & RESEARCH FOCUS

DATA SCIENCE
STATISTICAL ANALYSIS
MACHINE LEARNING

DESIGN & DEVELOPMENT
OF PATIENT- FOCUSED
DIGITAL SOLUTIONS

DISCOVERY THROUGH DATA
INTEGRATION & VISUALIZATION

TECHNOLOGIES ENABLEMENT
& SECURITY BY DESIGN

MULTI-SOURCE DATA
COLLECTION AND VALIDATION

PROJECT TYPES

REAL WORLD EVIDENCE SOLUTIONS
(DESCRIPTIVE/PREDICTIVE MODELLING)

DIGITALLY-ENABLED MODELS OF CARE
(VIRTUAL COMPANIONSHIP, DTX)

EXPLOITATION

RESEARCH PROJECTS

Gemelli



Fondazione Policlinico Universitario Agostino Gemelli IRCCS
Università Cattolica del Sacro Cuore

INTERNAL RESEARCH+
RESEARCH NETWORKS(HORIZON)

CO-DESIGN & CO-CREATION

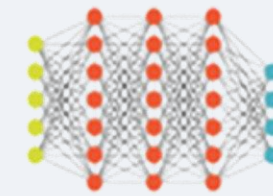
GDMH
Gemelli Digital Medicine & Health
YOUR REAL WORLD KNOWLEDGE COMPANY

INDUSTRIAL PARTNERS

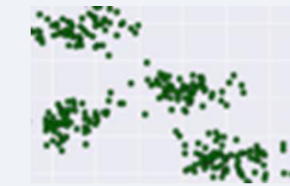
DATA PRODUCTS FOR RESEARCH & INDUSTRY



DESCRIPTIVE ANALYSIS



PREDICTIVE MODELS



SYNTHETIC DATA

PRIMARY RESEARCH ASSET: DISEASE DATAMART



SARS
COV-19



BREAST
CANCER



RECTUM
CANCER



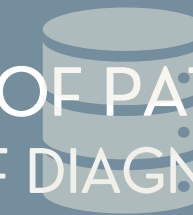
MULTIPLE
MIELOMA



HEART
FAILURE



LUPUS



STROKE
DATAMART



DYSLIPIDEMIA

RETROSPECTIVE OBSERVATIONAL COHORT OF PATIENTS
CHARACTERIZED BY A **DIAGNOSIS / GROUP OF DIAGNOSES**
WITH **DATA FROM STANDARD OF CARE**



SEARCH ENGINES

DATA COLLECTION TOOLS

ENCRYPTION AND ANONYMIZATION

DATA QUALITY TOOLS

NATURAL LANGUAGE PROCESSING

OTHER RESEARCH
REPOSITORIES

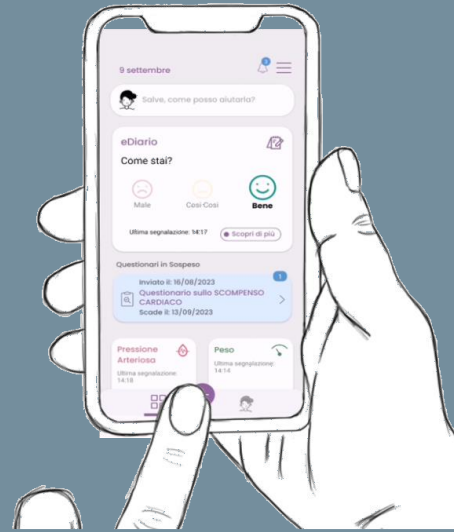


**GEMELLI IT SYSTEMS
DATAWAREHOUSE**
Main e-Health Records;
Diagnostic Systems; Laboratory;
ER; ICU; ...



REAL WORLD DATA FROM
OUTPATIENTS MONITORING
AND CONTINUOUS CARE
Remote Data Capturing,
Wearable, Patient Support App





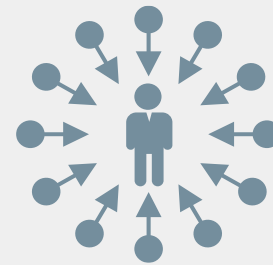
**MOBILE APP
FOR PATIENT
SELF-REPORTING,
COMMUNICATION
AND SELF-CARE**



**CLINICAL DASHBOARD
FOR CLINICAL STAFF
MONITORING, ADVISE
TO PATIENT,
PREVENTION AND
INTERVENTION**

**INTEGRATED CARE PROTOCOL
GUIDELINES, STANDARD OPERATING PROCEDURES, TECHNICAL INSTRUCTION AND SUPPORT**

**USER-CENTERED DESIGN AND
CO-DESIGN PROCESSES
ANALYSIS OF THE STATE OF THE ART:
NEEDS AND OPPORTUNITIES**



DESIGN AND IMPLEMENTATION
OF THE CARE PATHWAY

ITERATIVE AND INCREMENTAL

FEEDBACK

**CONTINUOUS
IMPROVEMENTS**

UX STUDY

TECH PLATFORM SETUP
TOOLS CREATION
CLINICAL TEAM TRAINING

CLINICAL STUDY

ENROLLMENT & ONBOARDING
PERSONALIZED CARE PLAN

DTX

PATIENT SELF-MANAGEMENT
REMOTE MONITORING BASED ON INTEGRATED CARE
PROTOCOL

RESEARCH ACTIVITY



TOT PROJECTS



RESEARCH RWD



INDUSTRY CO-FUNDED



EU PROJECTS



DIGITAL PLATFORM

ONCOLOGY 15

- CERVIX, RT
- BREAST, RT
- PROSTATE, RT
- INTERVENTIONAL RT
- PANCREAS
- LUNG

COVID-19 2

- VACCINE ADVERSE EVENTS
- VACCINE IN IPF PT
- LONG COVID
- RADIOTHERAPY
- PROCESS SUPPORT FOR EMPLOYEES

CARDIOLOGY 5

- HEART FAILURE
- HYPERTENSION

PNEUMOLOGY 1

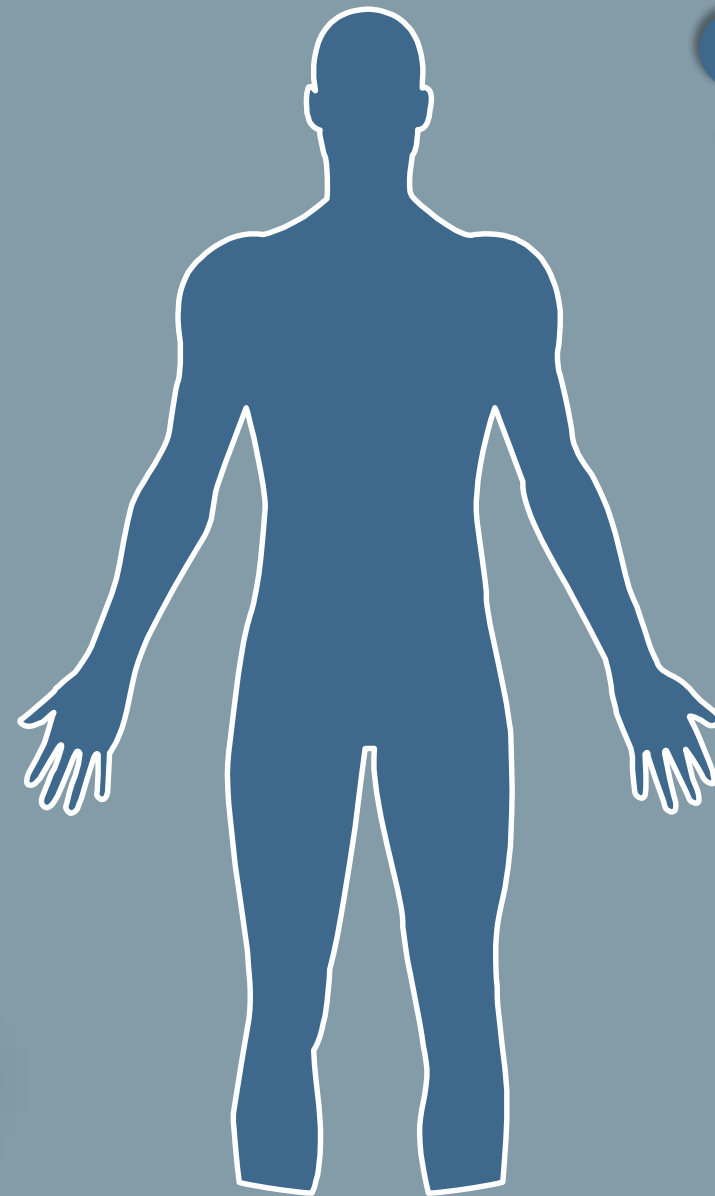
- COPD

PEDIATRICS 1

- SMA
- FETAL BRAIN

DERMATOLOGY & REUMATOLOGY 1

- SMA, FETAL BRAIN



INFECTIOUS DISEASES 3

- BSI, HIV

GASTROENTEROLOGY 5

- LIVER
- NAFLD
- DIABETES

GINECOLOGY 3

- OVARIAN CANCER

EMATOLOGY 4

- LYMPHOMA
- MULTIPLE MYELOMA

GERIATRICS 4

- COMPLEX PATIENTS

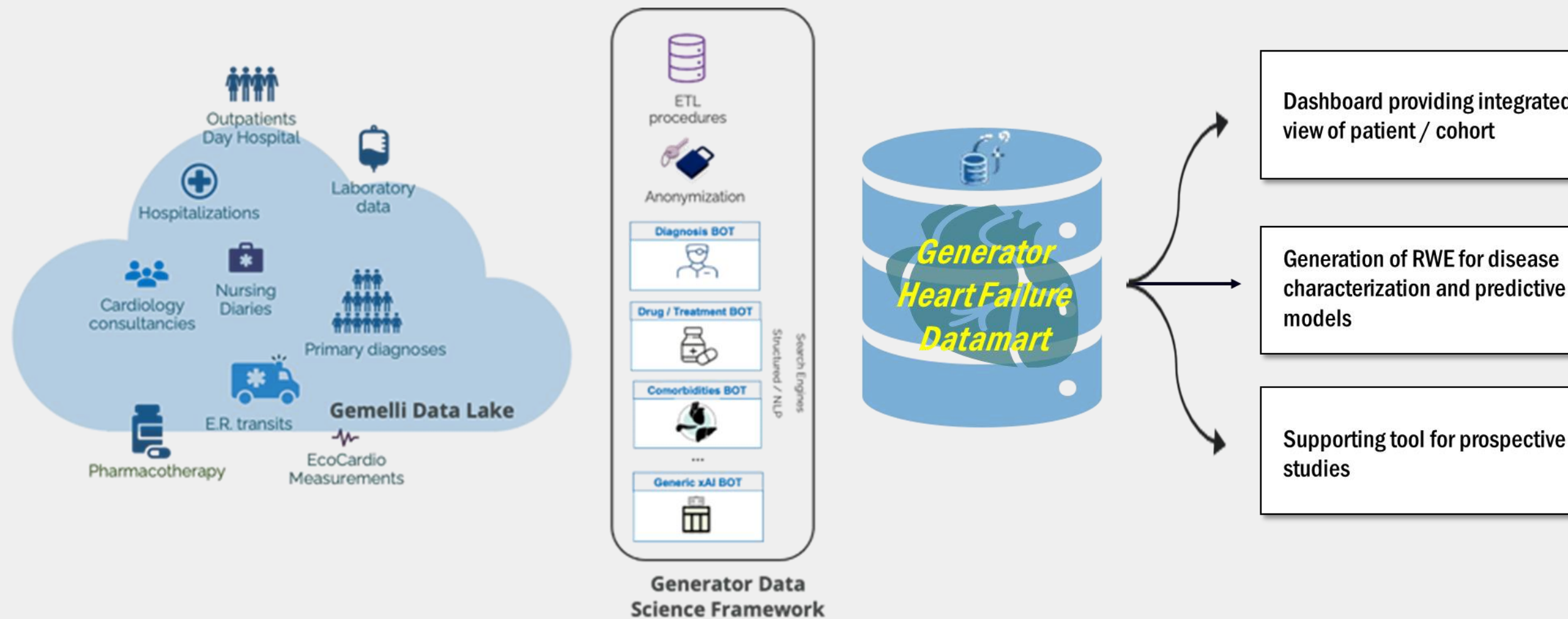
STROKE & ALZHEIMER 6

- READMISSION

USE CASE

HEART FAILURE PROGRAM

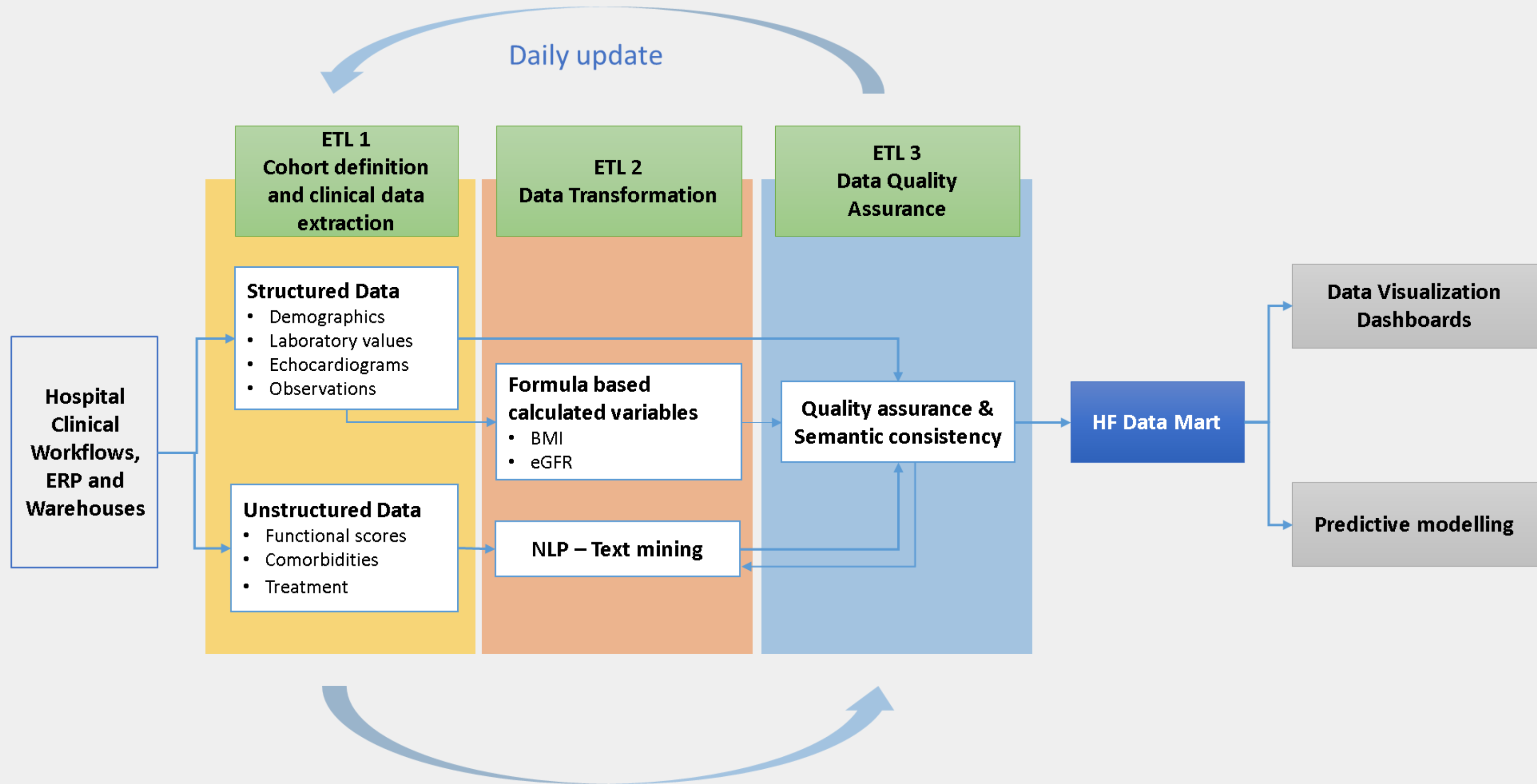
OVERVIEW OF RESEARCH PROGRAM ON HEART FAILURE



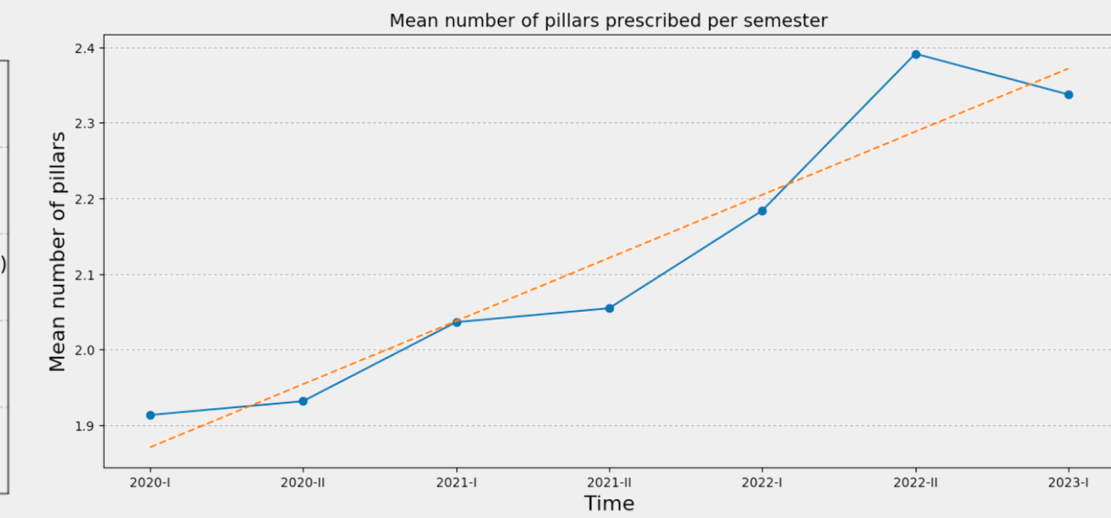
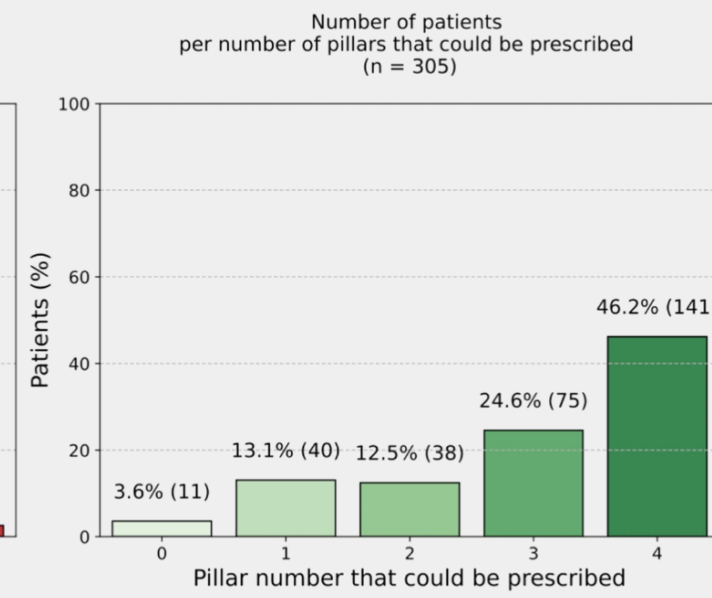
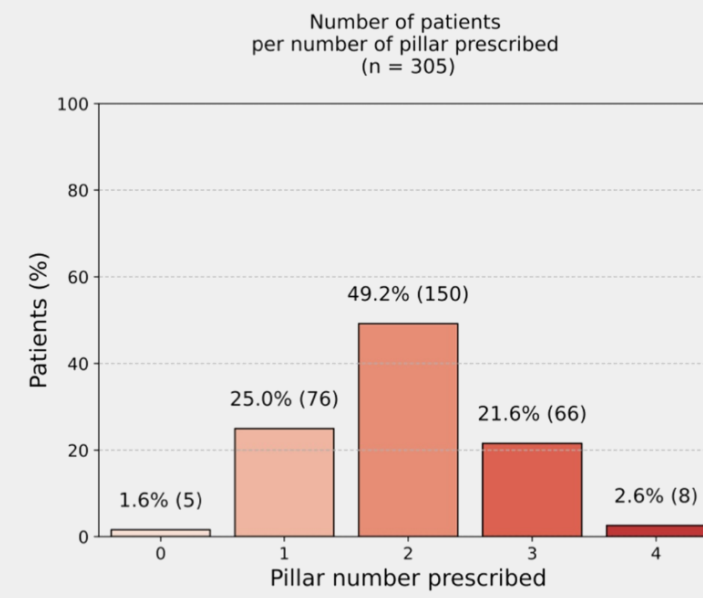
EXPLOITATION AREAS

- HEART FAILURE DATAMART BUILD AND CONTINUOUS UPDATE
- CLINICAL RESEARCH PROJECTS
- DIGITALLY ENABLED CARE MODEL: AZIMUTH
- HORIZON CONSORTIUM: DATATOOLS4HEART EU PROJECT

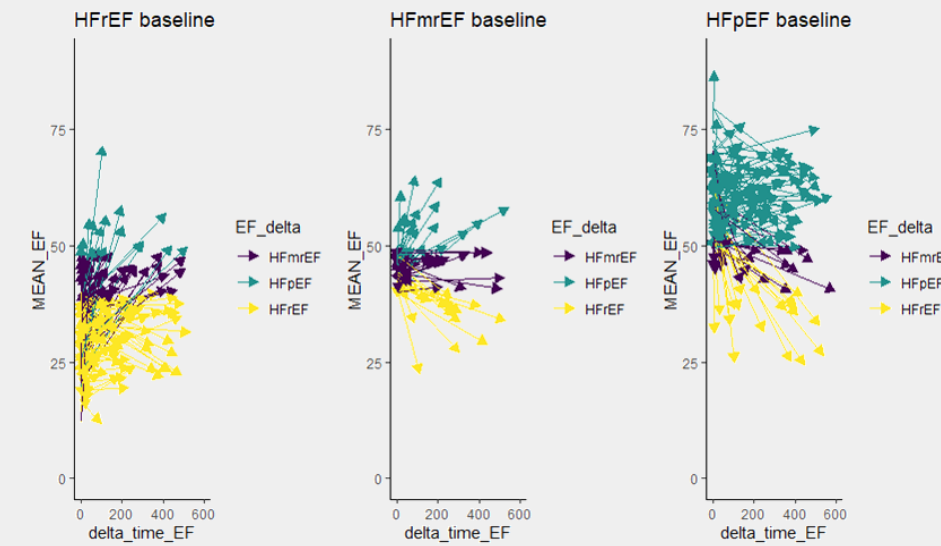
HEART FAILURE DATAMART DAILY UPDATE PROCEDURES



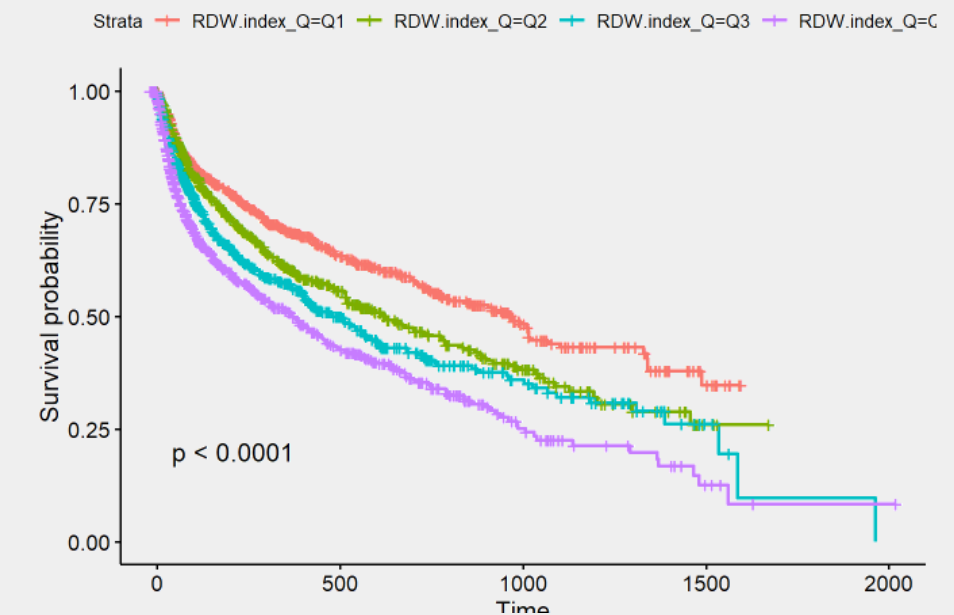
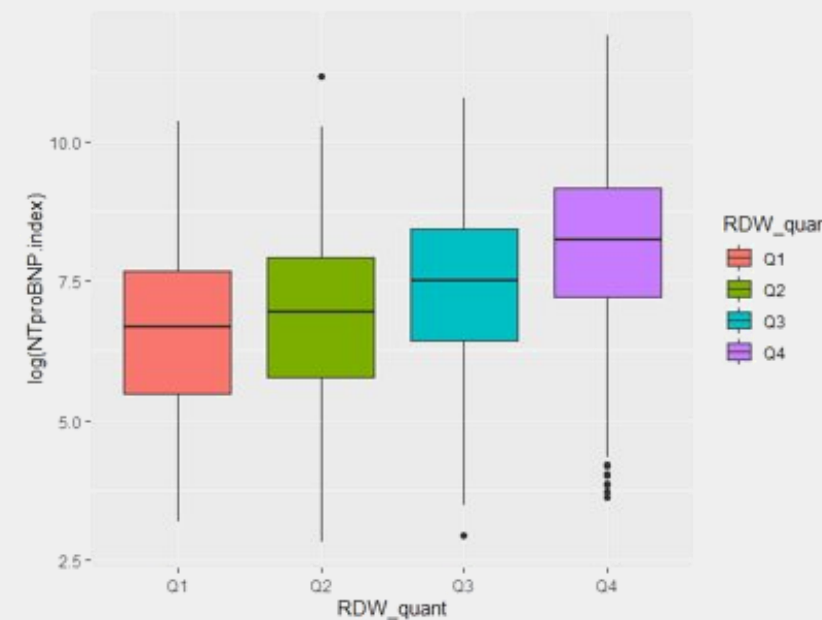
ELIGIBILITY FOR THE 4 PHARMACOLOGICAL PILLARS IN HEART FAILURE WITH REDUCED EJECTION FRACTION AT DISCHARGE



LONGITUDINAL TRAJECTORIES OF EJECTION FRACTION PHENOTYPES



RED BLOOD CELL DISTRIBUTION WIDTH AND PROGNOSIS IN PATIENTS WITH CHRONIC HEART FAILURE



SCIENTIFIC PRODUCTION:
 • 2 PUBLISHED
 • 4 IN PROGRESS

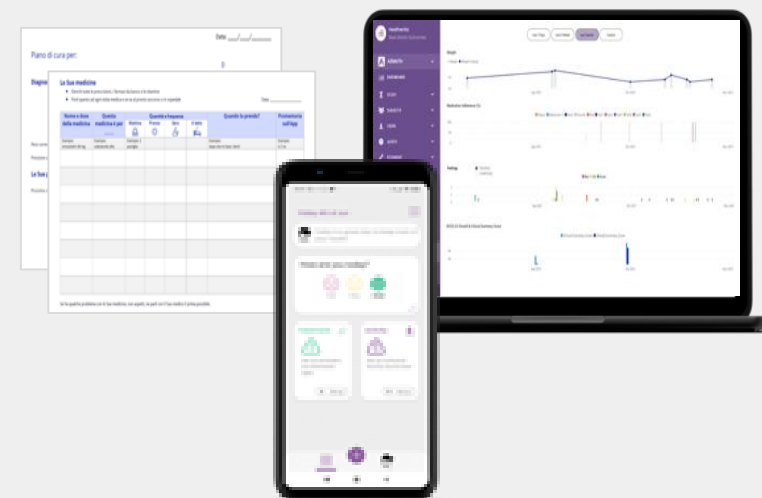
AZIMUTH

AZIMUTH IS A MODEL OF CARE THAT ENABLES:

TO PERFORM THE PHYSICIAN AN EARLY CLINICAL ACTION ON THE BASIS OF RWD TO THE PATIENT TO BETTER SELF-MANAGE AND STAY IN CONTACT WITH THE CLINICAL TEAM

PERIODIC VISIT / HOSPITAL DISCHARGE

- CARE PLAN CUSTOMIZATION WITH CARE PLAN CANVAS
- PATIENT TRAINING ON HEALTHENTIA APP
- CARE PLAN ENTERED INTO THE CLINICAL PLATFORM (AFTER THE VISIT)



THE PATIENT AT HOME

THE PATIENT SHARES QUESTIONNAIRES AND VITALS PARAMETERS

REQUIRED DATA:

- MONTHLY: KCCQ-23
- WEEKLY: MMAS-8
- ONCE DAILY: BLOOD PRESSURE AND WEIGHT

+ OPTIONAL FUNCTIONS, VIRTUAL CHATBOT, MESSAGING WITH HOSPITAL

REMOTE MONITORING

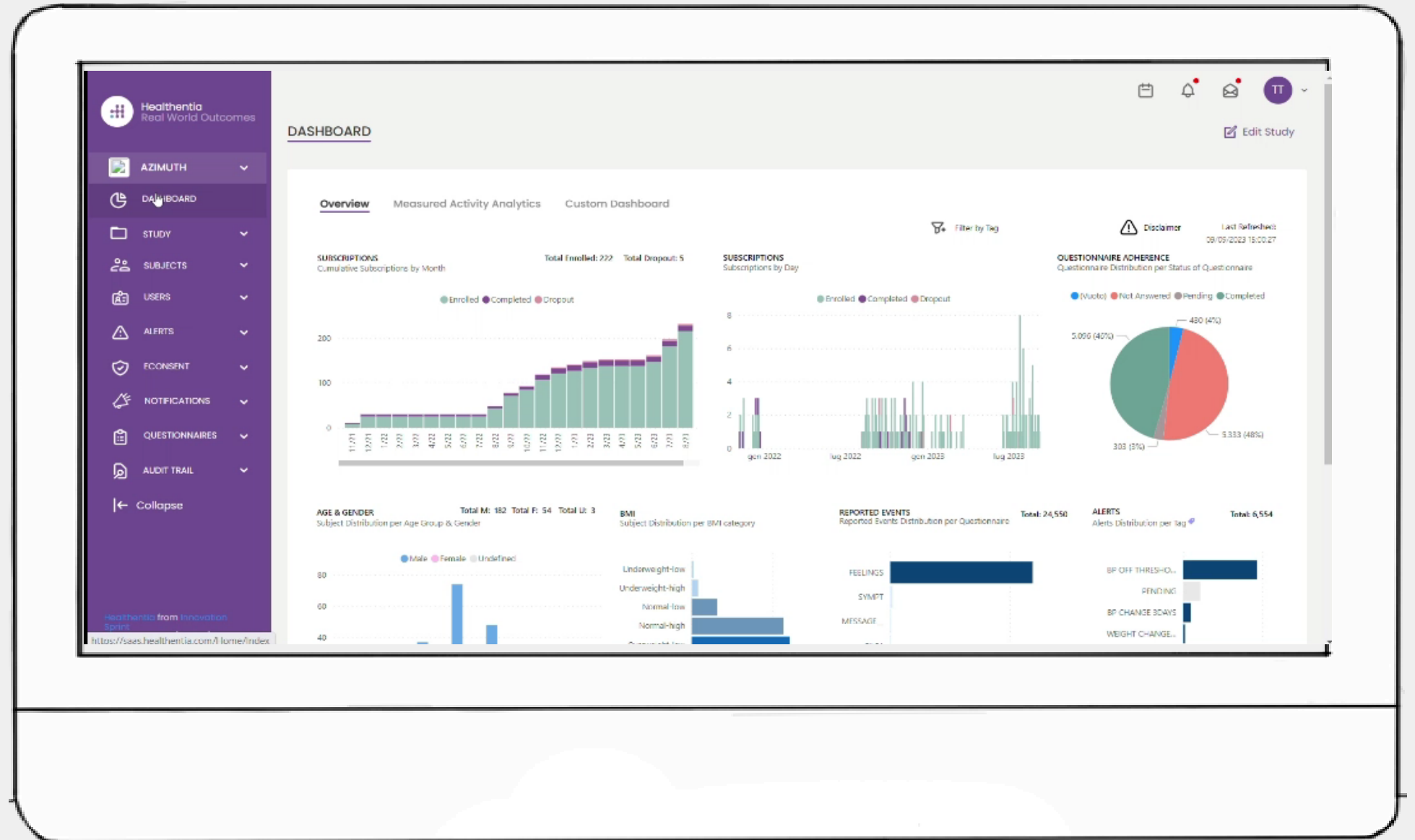
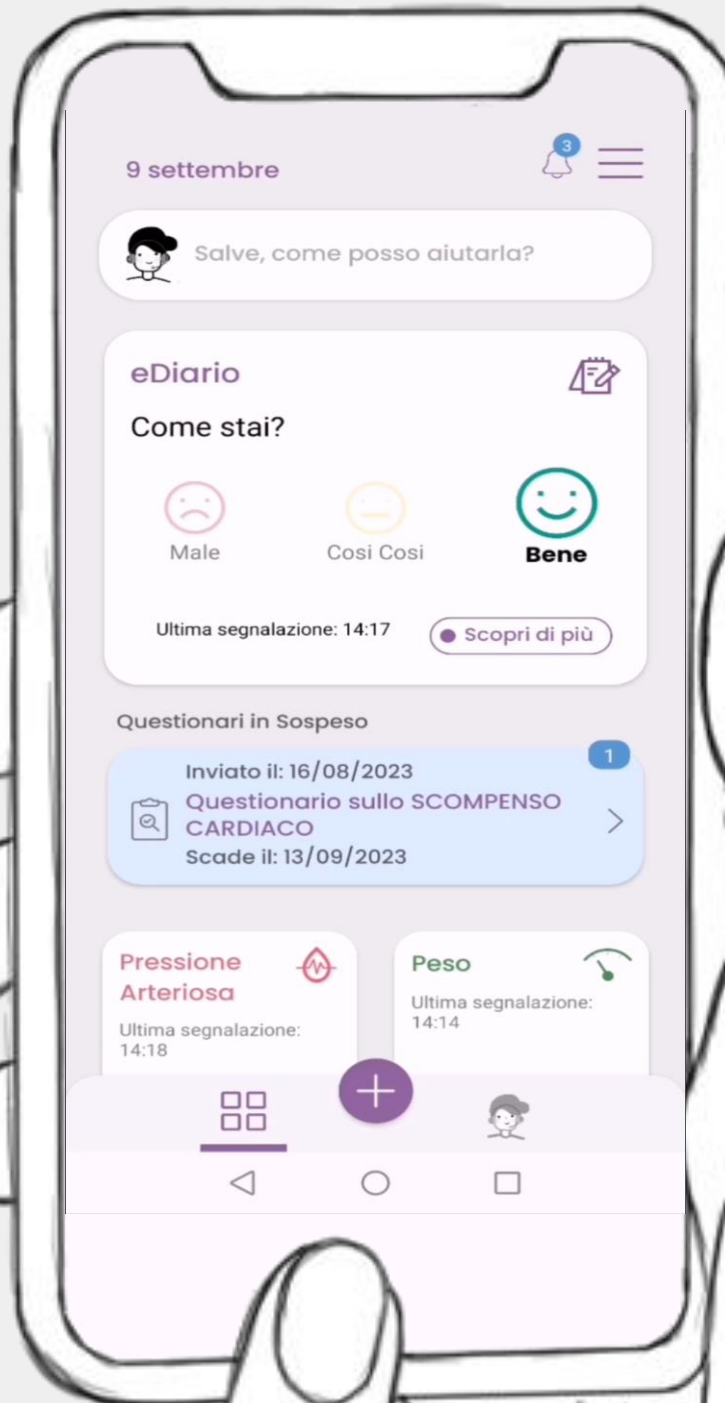
PATIENT SITUATION REVIEW:

LIST WITH PRIORITIZED PATIENTS > PATIENT CARD AND DIRECT PATIENT COMMUNICATION (MESSAGE/VIDEO) > ACTION AS NEEDED SUPPORT TO PATIENT REQUESTS VIA MESSAGING (CLINICAL AND TECHNICAL)

FOR EMERGENCY SITUATIONS PATIENTS HAVE EMAIL AND PHONE CONTACT, NOT A 24H/7DAYS MONITORING TOOL, WITH DIRECT INTERVENTION BY THE CLINICAL TEAM. APPROPRIATE LIABILITY RELEASE DOCUMENT SIGNED BY PATIENT AT ENROLLMENT.



AZIMUTH



GENERATOR REAL WORL DATA FUTURE PERSPECTIVE

- CERTIFICATION OF THE DATA MINING PIPELINE BY BLOCKCHAIN
- MAPPING OF DATA SOURCES TO INTERNATIONAL STANDARDS (SUCH AS OMOP, FHIR)
- STANDARDIZATION AND VALIDATION OF EXTRACTION PROCEDURES FROM CLINICAL REPORTS

Gemelli



Fondazione Policlinico Universitario Agostino Gemelli IRCCS
Università Cattolica del Sacro Cuore

THANK YOU!

carlotta.masciocchi@policlinicogemelli.it



GemelliGenerator
Clinical research beyond tomorrow