

# European Alliance of Medical Research Infrastructures



**Toni Andreu, MD, PhD, EATRIS Scientific Director**



# WHO ARE WE

Accelerating patient-centric biomedical research providing evidence for the development of Personalised Medicine

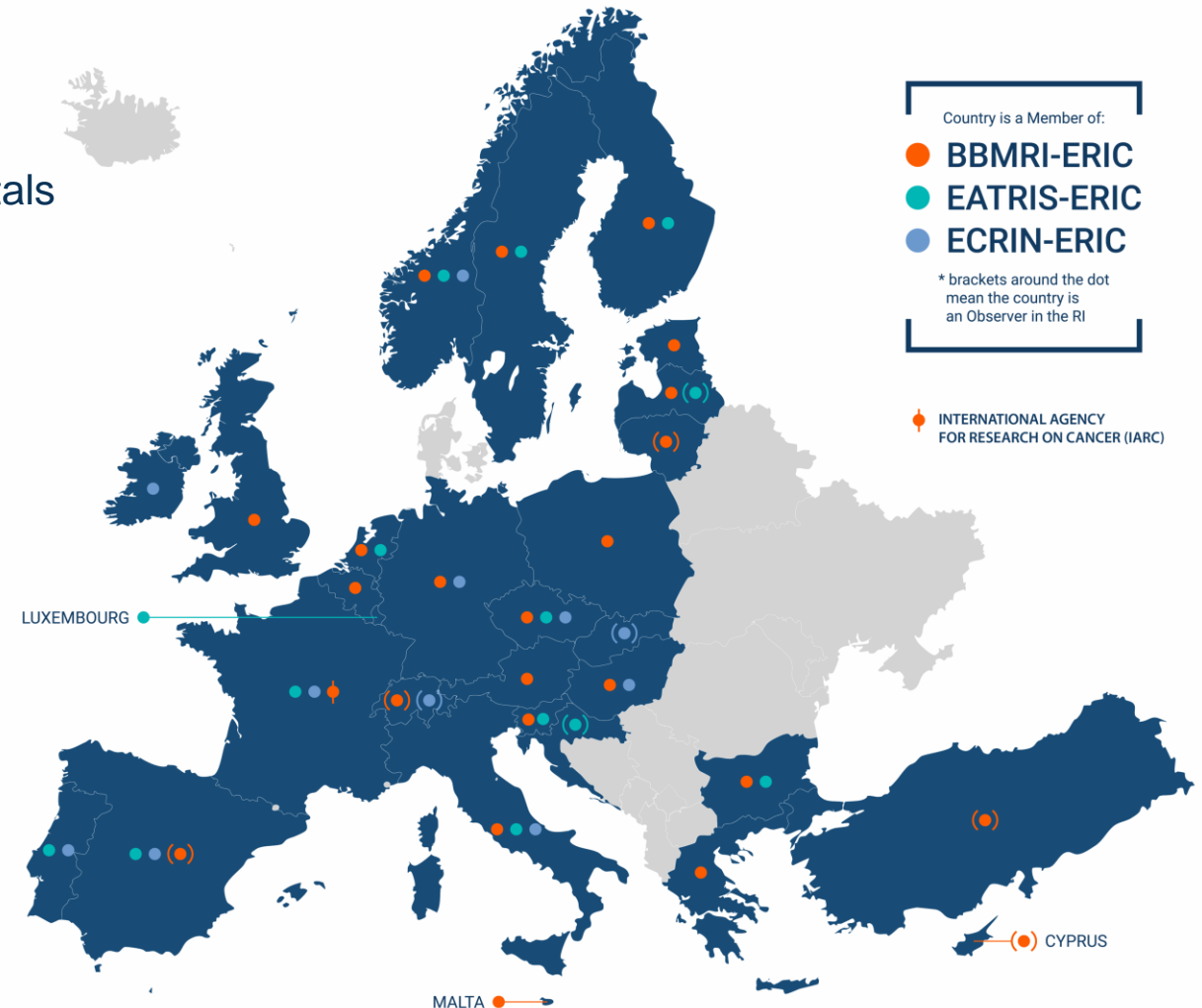


## Who are we

- Over 700+ research institutions and university hospitals
- EU-AMRI members started operations in 2014
- **29 European Countries** as Members or Observers

## 3 areas of focus

- Biobanking & Biomolecular Resources
- Translational research
- Multinational clinical trials





## European Research Infrastructure for Biobanking and Biomolecular Resources

- Facilitating access to samples, data and biomolecular resources while connecting all stakeholders in biomedical research.



## European Research Infrastructure for Translational Medicine

- Provides services for biomedical innovation and translational medicine, from target validation to early clinical trials.



## European Clinical Research Infrastructure Network

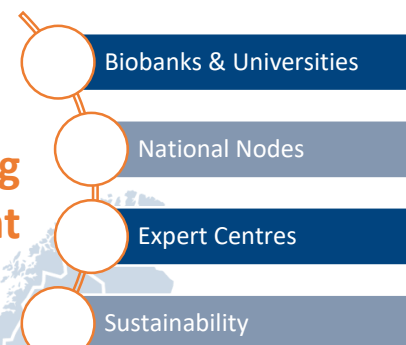
- Facilitating clinical trials across borders, supporting sponsors and investigators to effectively design, plan and conduct multinational clinical trials.

## 23 Member States & IARC enabling precision medicine through:

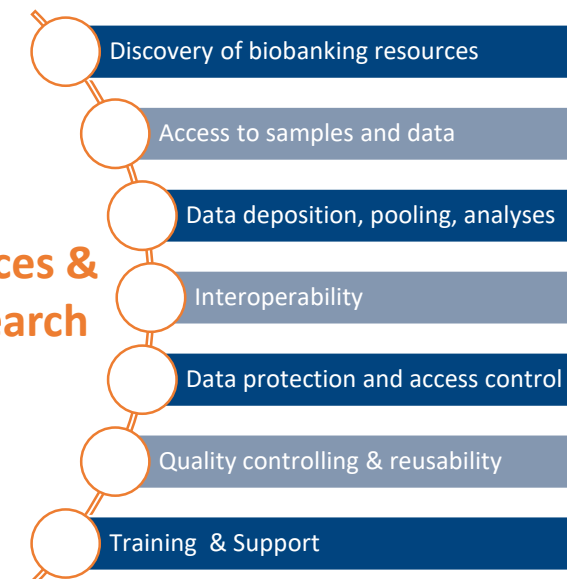


### ELSI Services & Research

### Biobanking Development

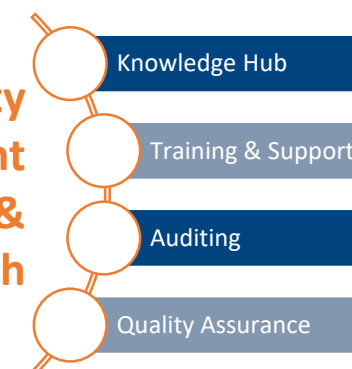


### IT Services & Research



### Public Affairs & Stakeholder Engagement

### Quality Management Services & Research



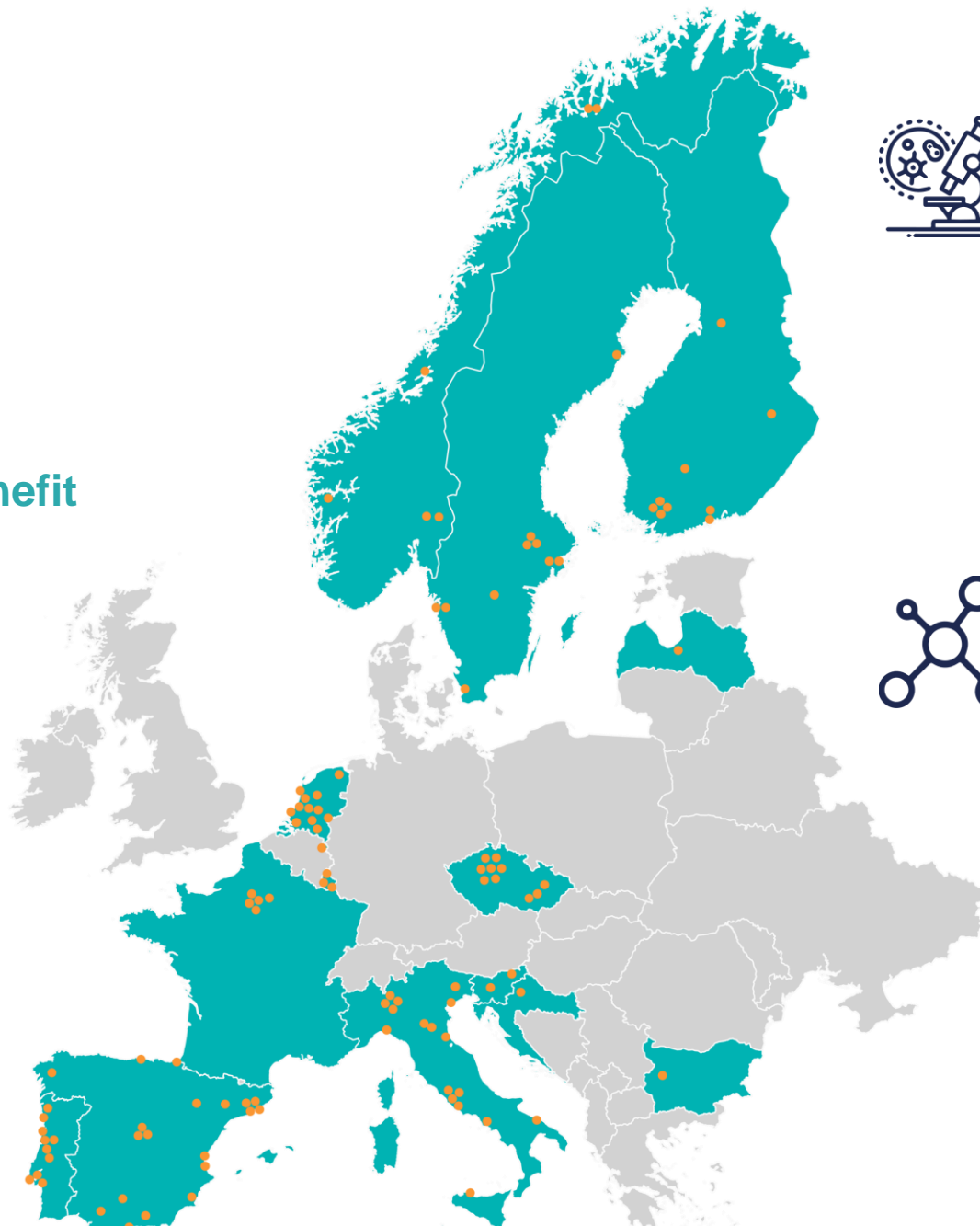


European infrastructure  
for translational medicine

Supporting researchers  
translate biomedical  
discoveries into patient benefit



Providing access to  
expertise and facilities  
from 115+ top-tier  
academic institutions  
across Europe



■ EATRIS Member Countries (Latvia and Croatia are Observers)  
● EATRIS Institutions



Services for academia, industry, public funding agencies, charities and policy makers. We provide regulatory and HTA services, education and training, as well as mentoring programmes.



We overcome barriers to preclinical and early clinical development of drugs, vaccines and diagnostics.

Solutions are developed in the fields of advanced therapy medicinal products, imaging and tracing, small molecules, vaccines and biomarkers.

Find out more at [www.eatris.eu](http://www.eatris.eu)

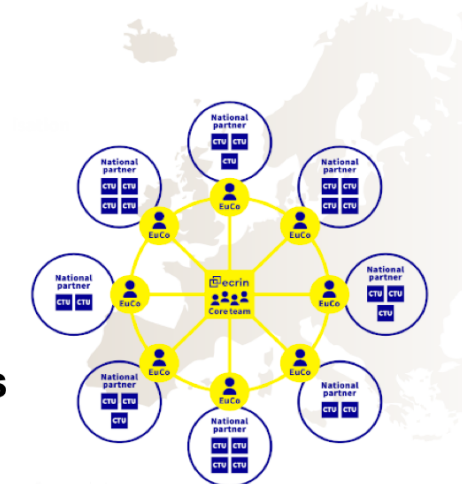
# ECRIN: Supporting clinical trials across borders

**ECRIN's mission** is to support the conduct of multinational clinical trials across Europe

- **Distributed** research infrastructure | **12** countries | **350** million EU citizens | **100** Clinical Trial Units | **70** clinical trials supported | **40** Infrastructure projects
- ISO 9001:2015 certified for its core services

## ECRIN Activities & Services

- **Coordinated support to multinational trial management:**
  - Collaboration on trial planning and design
  - Operational trial management services
- **Development of new services, tools, methods, knowledge and partnerships**



# WHY FORMING AN ALLIANCE?



1

**Defragment and optimise  
the existing research  
infrastructure and health  
research ecosystem**

2

**Make access to facilities,  
resources and research services  
easier from researchers from  
pre-clinical phase to clinical  
trials**

3

**Fill in research and  
technological gaps to  
accelerate personalised  
medicine solutions**

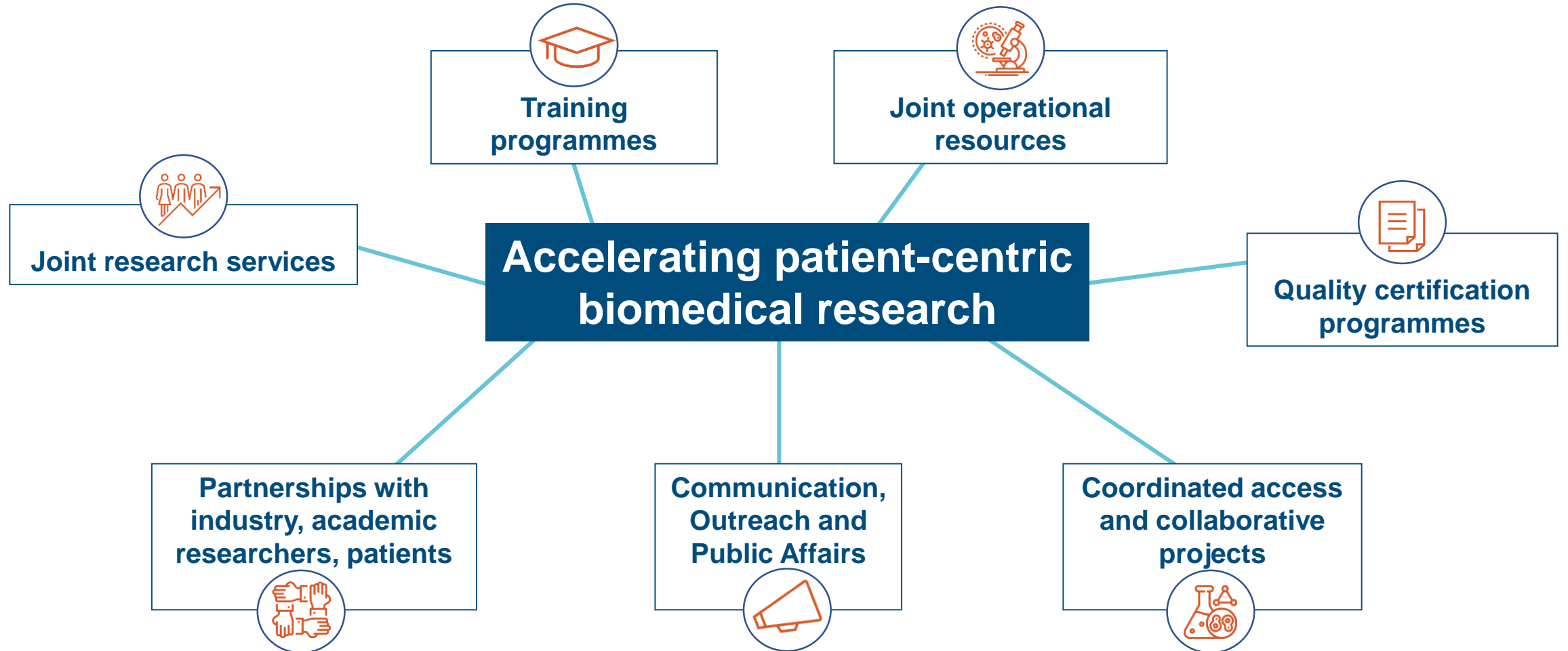


# HOW WE WORK TOGETHER

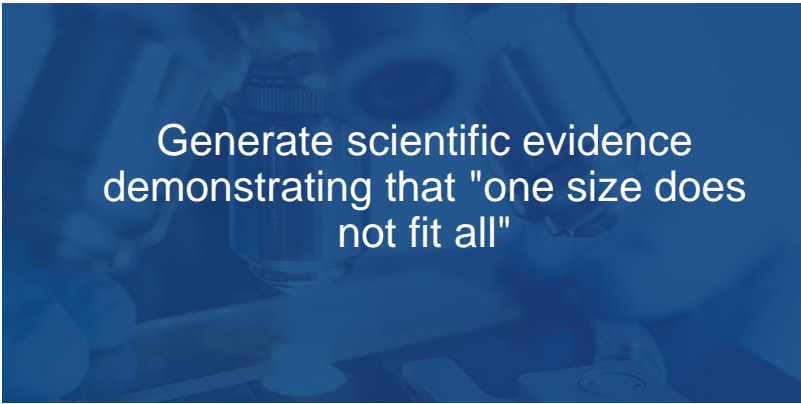
By accelerating patient-centric biomedical research we  
support the development of Personalised Medicine



# WHAT WILL WE DO TOGETHER




# WHAT DO WE DO FOR THE DEVELOPMENT OF PERSONALISED MEDICINE?



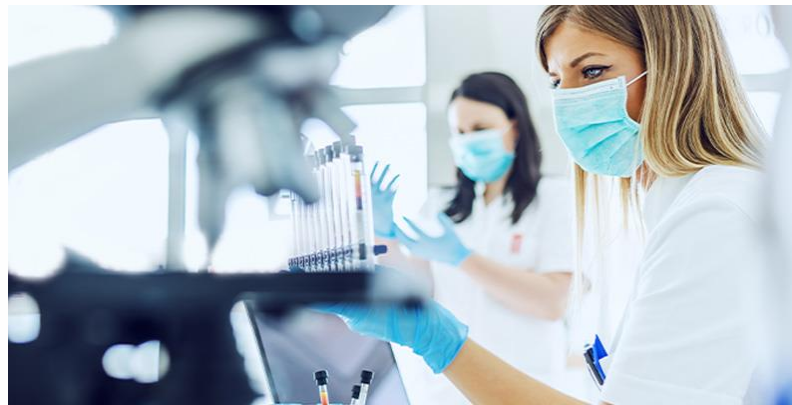
Generate scientific evidence  
demonstrating that "one size does  
not fit all"



Understand and deliver the clinical  
benefits of Personalised Medicine



Offer patients/scientists-driven  
educational initiatives



Support a policy landscape for  
implementing Personalised Medicine

# JOINTLY DEVELOPING NEW TOOLS AND SERVICES NECESSARY FOR THE PROGRESS OF PERSONALISED MEDICINE





Everything is about you

*“You wouldn’t wear just any pair  
of glasses. Your prescription is  
tailored to your vision”*



## Researchers

Scientific excellence, a better understanding of the biology of disease

## Funders

Optimised return on public investment from shared research resources and services

## Patients

Empowered and engaged in bringing personalised solutions faster to the health systems

## Policy-makers

Proof-of-concept for the consolidation of a Personalised Medicine research landscape



Thank you for your attention



[eu-amri.org](http://eu-amri.org)



[contact@eu-amri.org](mailto:contact@eu-amri.org)



[EuAmri](https://twitter.com/EuAmri)



[Linkedin.com/company/eu-amri/](https://www.linkedin.com/company/eu-amri/)